

JOINT-FREE PIPING SYSTEM

Size Range	Inner Dia	Outer Dia
1216	12mm	16mm
1620	16mm	20mm
2025	20mm	25mm
2532	25mm	32mm
3240	32mm	40mm
4050	40mm	50mm

Available in Rolls of 50m, 100m & 200m
(Depending on the pipe size)

Adhesive Layers
The adhesive layer perfectly bonds the polyethylene and aluminium layers and absorbs the eventual shifting movements between the layers.

Aluminium Core
The aluminium core stays where it lays and has high mechanical strengths. It has the ability to withstand high temperatures and pressure. The aluminium core acts as the pipe's backbone with its mechanical resistance to deformations.

Internal & External Polyethylene Layers
The Polyethylene layers are lightweight, flexible and chemically inert. It provides a smooth surface for better flow and is a food grade material.

50 Years of Work

Hygienic

Fire

Easily Bendable

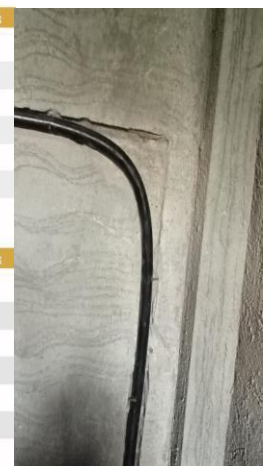
Easy

Light

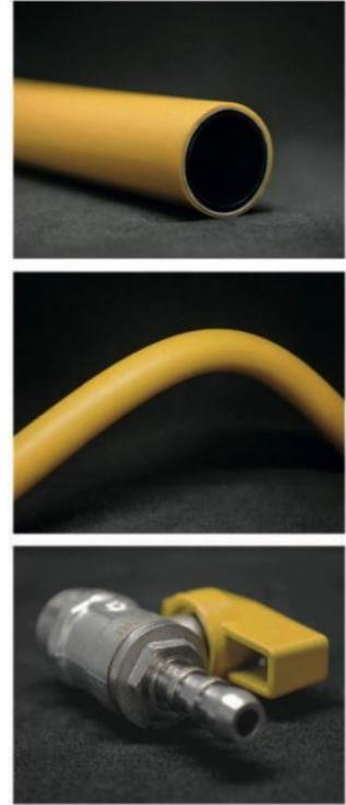
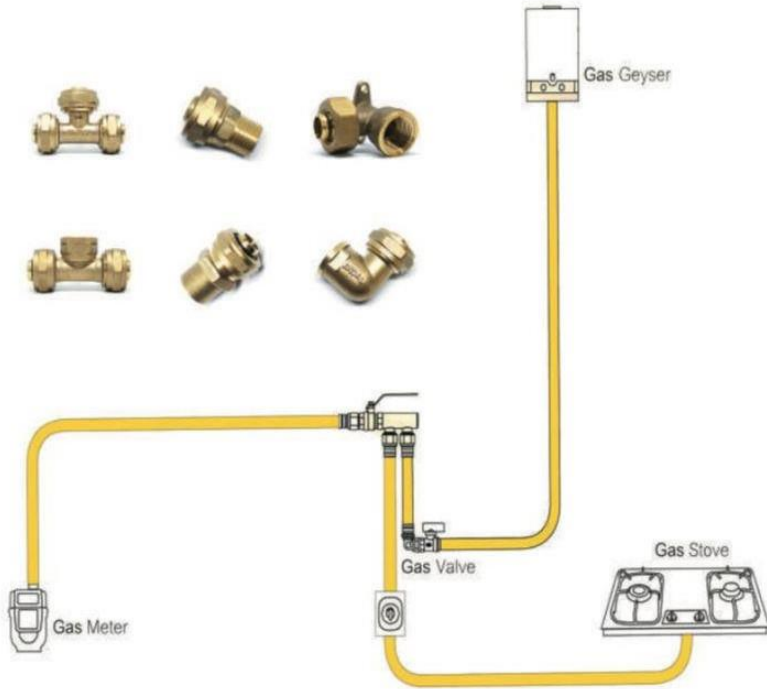


PIPE UV (ISI)			
	MM	Inches	Meters
<p>COLD WATER Specification : PE/AL/PE Colour : Black Temperature : UP TO 80°C Pressure : 1 Mpa</p>	12 16	½"	200
	16 20	¾"	200
	20 25	1"	100
	25 32	1¼"	100
	32 40	1½"	50
	40 50	2"	50

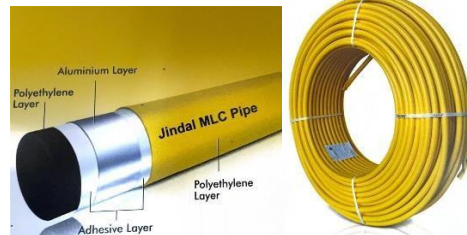
PIPE B			
	MM	Inches	Meters
<p>HOT WATER Specification : PE-RT/AL/PE-RT Colour : White Temperature : UP TO 95°C Pressure : 1 Mpa</p>	12 16	½"	200
	16 20	¾"	200
	20 25	1"	100
	25 32	1¼"	100
	32 40	1½"	50
	40 50	2"	50



JINDALMLCPIPES FOR GAS SUPPLY



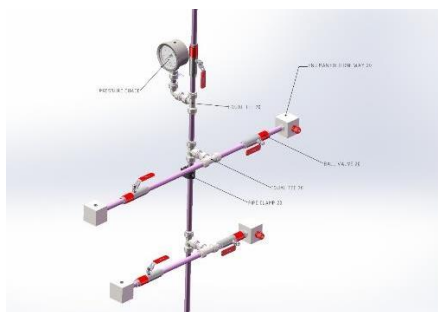
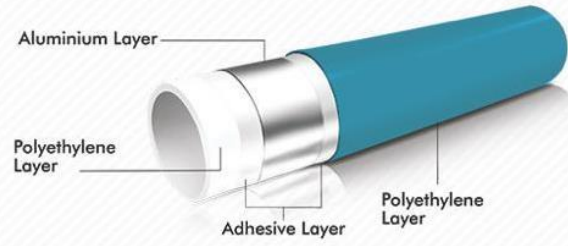
FITTINGS



Send Email to: samengservices@gmail.com Price, Quotation



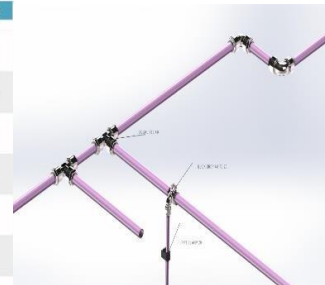
JINDAL AIR CONNECT
Compressed Air Piping System



PIPE D	MM	Inches	Meters
	12 16	½"	200
	16 20	¾"	200
	20 25	1"	100
	25 32	1¼"	100
	32 40	1½"	50
	40 50	2"	50

AIR-CONNECT

Specification : PE/AL/PE
 Colour : BLUE
 Temperature : -20°C TO 80°C
 Pressure : 232 psi or 1.6 Mpa



Send Email to: samengservices@gmail.com Price, Quotation

